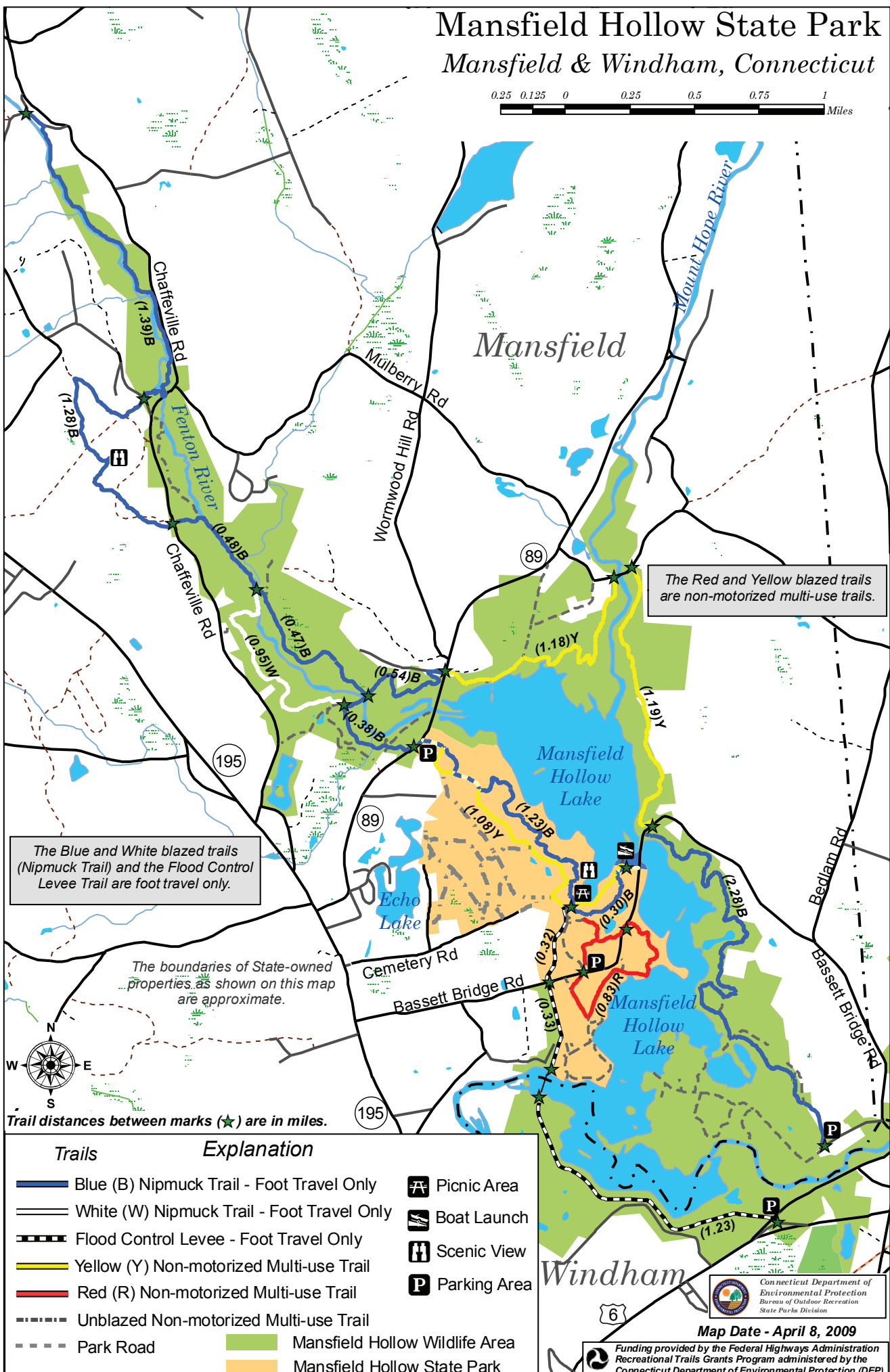


Mansfield Hollow State Park

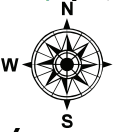
Mansfield & Windham, Connecticut



The Red and Yellow blazed trails are non-motorized multi-use trails.

The Blue and White blazed trails (Nipmuck Trail) and the Flood Control Levee Trail are foot travel only.

The boundaries of State-owned properties as shown on this map are approximate.



Trail distances between marks (★) are in miles.

Trails	Explanation
	Blue (B) Nipmuck Trail - Foot Travel Only
	White (W) Nipmuck Trail - Foot Travel Only
	Flood Control Levee - Foot Travel Only
	Yellow (Y) Non-motorized Multi-use Trail
	Red (R) Non-motorized Multi-use Trail
	Unblazed Non-motorized Multi-use Trail
	Park Road
	Mansfield Hollow Wildlife Area
	Mansfield Hollow State Park
	Picnic Area
	Boat Launch
	Scenic View
	Parking Area

Connecticut Department of Environmental Protection
Bureau of Outdoor Recreation
State Parks Division

Map Date - April 8, 2009

Funding provided by the Federal Highways Administration Recreational Trails Grants Program administered by the Connecticut Department of Environmental Protection (DEP).